

## Salmo Ski Hill 2015 Operating Season

### SVTS Annual Work Plan

#### 2014 Review

Our goal for 2014 had been to complete construction of a 2.5km loop trail (Figure 1) with scouting and possibly layout for the remainder of a trail to the top of the ski hill if time permitted.



Figure 1. Original 2014 proposed layout for the Sunset Loop trail.

Our actual achievements included (Figure 2):

- Layout of 2km of Sunset Loop. During layout process it was determined that the descending portion of the trail on the east side would be extremely challenging to locate within the Controlled Recreation Area (CRA) because of slope, unnamed creek and ski run. The remaining portion of the loop will be located on the Crown land to the east of East Run
- Clearing, construction, finishing and signage of first 500m of the 2km.
- Clearing of additional 300m of the 2km immediately beyond the completed section
- Receipt of our Water Act notification for construction of bridge over Sunset Creek.

## 2015 Objectives

Our objectives and proposed timelines for 2015 are:

- Complete maintenance of existing trail (May)
- Complete construction of Sunset Loop (May/June/July until fire season)
- Complete construction of the Summit trail (September/October/November)
- Layout intermediate trail (April/May)
- Construction of intermediate trail (May-November)

## Maintenance

Maintenance of the existing 500m of trail will be completed immediately upon approval of the annual work plan. Maintenance activities will consist of:

- Ensuring signage is secure and in place
- Clearing blow down and brush from winter
- Repairing drainage features

## Sunset Loop and Summit Trail

The Sunset Loop departs from the bottom of the West Run and climbs through the forest between West Run and Sunset Creek (Figure 2). It will come out onto the run where Sunset Creek is culverted. It will cross the run and creek at the culvert and then enter back into the forest mirroring the west access road. The trail crosses the West Run using the existing road and gets onto an old road in the forest between the West Run and No Guts No Glory. A creek crossing will be required. The trail again uses existing roadbed to cross over to East Run. The route will then leave the CRA, re-entering at the bottom of the East Run and connecting back to the parking lot.

The Summit trail will leave Sunset Loop at 1.5km, follow up the trees east of the West Run and then cross the West Run at a flat bench. The trail then climbs through the trees immediately west of the West Run, coming out at the top of the West Run (Figure 2).

Randy Boardman has completed the majority of trail layout for these trails with follow-up support from Lisa Tedesco, Jillian Russell and Elliot Russell. Trail layout has avoided mature trees wherever feasible however to make trail construction and layout easier in this steeper ground we do anticipate needing to remove 10-12 mature trees. These are primarily cedar and hemlock with diameters of 20-25cm on areas of steeper ground where switchbacks are required. A tree-cutting permit has been prepared and is attached as an appendix.

For Sunset Loop and the Summit trail, a public tender process will be undertaken through the end of April with the target date for selection of the successful bidder of early May. As with 2014, a small machine such as the Kubota U17-HGS will be used for construction. Based on contractor input, minor adjustments may be required during construction. Trail clearing will be completed by the contractor, however volunteers may provide support if necessary to manage costs or there is particular interest from volunteers.



Small trees and shrubs will be cut flush at the base. Larger stems (7cm to 17cm diameter at breast height) will be cut at a height of approximately 1m to allow for the small machine to grasp onto them and remove them. Trees larger than 17cm will be marked for retention. Only certified operators with required personal protective equipment will be permitted to operate chainsaws. The small machines will be used to remove stumps and root wads and rough in the trail bed. Volunteers will finish the trail bed using basic tools such as MacLeods, picks, shovels, pulaskis and rakes.

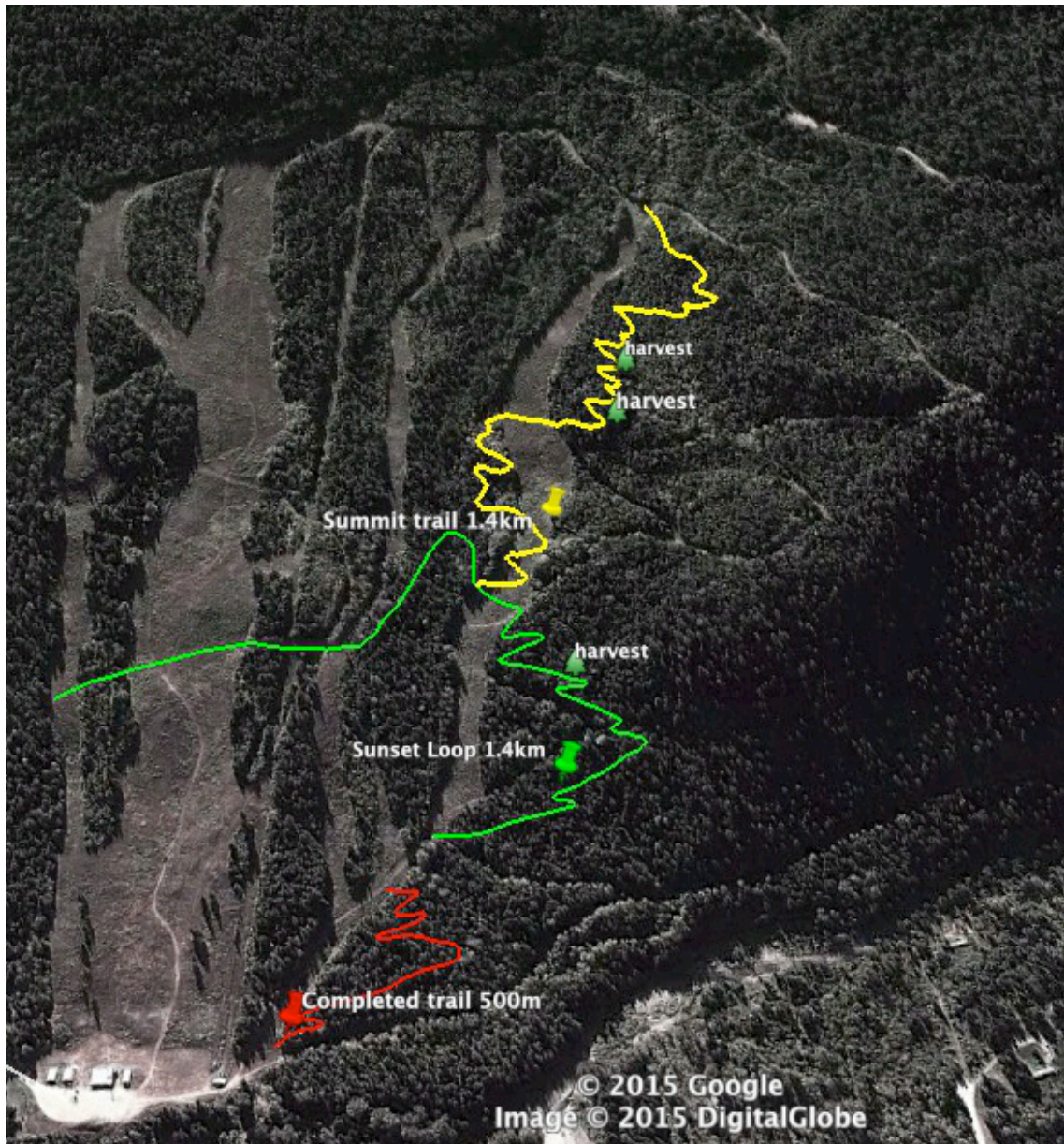


Figure 2. Map of existing trail (red) and trail at layout stage (green and yellow) ready for machine construction. Green trees indicate potential areas of tree cutting.



## Intermediate Trail

The purpose of the intermediate trail is to provide a more challenging option for hikers and mountain bikes. An intermediate trail will also reduce the amount of descending mountain bike traffic on the green rated summit trail.

SVTS volunteers will complete trail layout of the intermediate trail. Elliot Russell and Tristan Ray are the trail construction managers. Trail construction managers are responsible for:

- Initial trail layout and design
- Completing any required layout adjustments based on SVTS Board of Director or SSC feedback
- Maintaining SVTS owned trail building tools, equipment and supplies
- Tracking number of volunteers and hours participated

Phase 1 of the intermediate trail has been laid out and is ready for approval (Figure 3). The first section is approximately 370m.

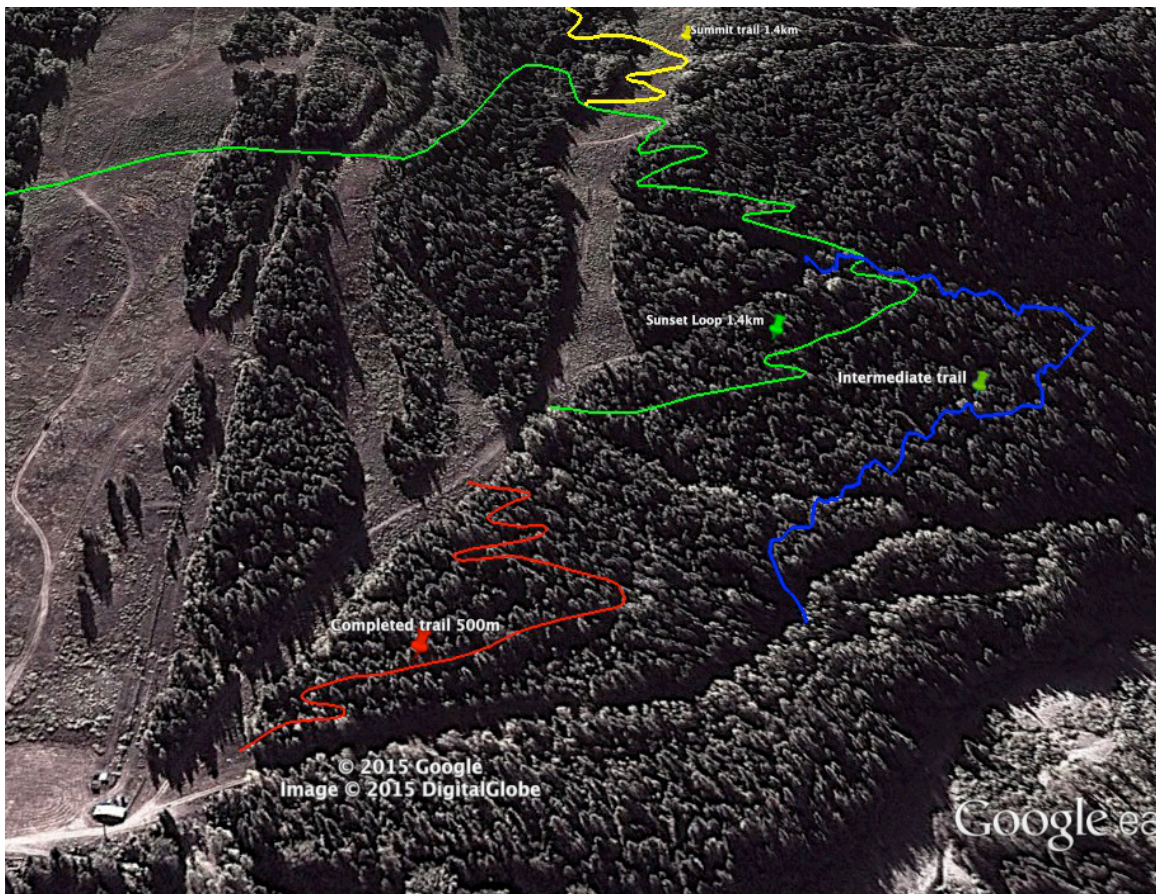


Figure 3. First phase of the intermediate trail (blue).

Trail construction will be hand construction. SVTS volunteers will clear brush and trees from the designated trail route using chainsaws and brushsaws. Brush and trees will be painted (similar to a mark to cut system) to ensure volunteers know what must be removed versus cannot be removed and at what height to cut the material at. Small trees and shrubs will be cut flush at the base. Larger stems (7cm to 17cm diameter at breast height) will be cut at a height of approximately 1m to allow for the small machine to grasp onto them and remove them. Trees larger than 17cm will be marked for retention. Only certified operators with required personal protective equipment will be permitted to operate chainsaws and brushsaws. SVTS volunteers will clear, construct and finish the trail bed using basic tools such as McLeods, picks, shovels, pulaskis and rakes.

Community volunteer build days will be held weekly on a night to be determined based on member feedback. Weekend community volunteer build days will be held once or twice a month. At least two individuals listed as managers and assistants or on the Board of Directors will be present at any volunteer build event. These individuals will be responsible for ensuring that required signage is in place prior to work starting.

### Signage

Signage consists of under construction safety signage, difficulty and directional signage on completed trails and trailhead signage.

Prior to clearing and construction starting on a section of trail a “trail closed” sign will be installed at each access point.

Safety and directional signage will be installed once a section of trail is completed and before being opened to the public. This will consist of a difficulty sign (e.g. green circle, blue square) and informational sign indicating allowable uses. Where there are trail junctions signs will be installed with name of trail and arrow indicating direction to go to follow that trail. If trail junction is multi-directional cautionary signage such as “Caution Trails Merge” will be installed.

In the fall a kiosk will be installed in the parking area at a location to be determined with the SSC. The kiosk will include a large map of the area trails, allowable uses information, trail user guidelines (e.g. pack in what you pack out), and SVTS contact information.

SVTS will continue to obtain signs from Inter-Mtn Enterprises Ltd. in Kelowna.

### Permits

The loop trail crosses Sunset Creek at a historic roadbed crossing. The required Ministry of Forests, Lands and Natural Resource Operations, Water Act Section 9 notification has been received (attached).

A License to Cut permit has been prepared and is submitted as an appendix to this plan. The License to Cut needs to be submitted and held by the SSC as the tenure holder but the SVTS has completed the paper work.

### Events

The SVTS would like to hold a grand opening event upon completion of the trail. A BBQ and guided tour or perhaps “tag team” race where pedestrians and cyclists tag off for alternate laps could be organized. Group rides and hikes may also be organized to encourage community use.

### Approval

Dated at Salmo, BC on this \_\_\_\_ day of April, 2015.

The Salmo Ski Club by its authorized  
Signatory:

\_\_\_\_\_  
Per:

\_\_\_\_\_  
Per:

The Salmo Valley Trail Society  
by its authorized signatory:

\_\_\_\_\_  
Per:

\_\_\_\_\_  
Per: