

Salmo Ski Hill 2017 Operating Season

SVTS Annual Work Plan

2016 Review

We received \$3004 from Dot night which was used to purchase two piss-cans, which were installed at Sunset Creek bridge, and to pay for machine time to fix a couple major water problems on Sunset and Sunrise. For new construction our goal had been to complete construction of Inducer. We didn't apply for any funding to be used for new construction and did all work with volunteers. We ended up completing approximately half of Inducer, about 1.3km of intermediate graded trail recommended for mountain biking but open to use by hikers. We designated this trail as "downhill users have right of way" given the mountain bike focused design. No new trail layout was completed. Total volunteer hours for construction was ~350hrs and maintenance was ~150hrs.

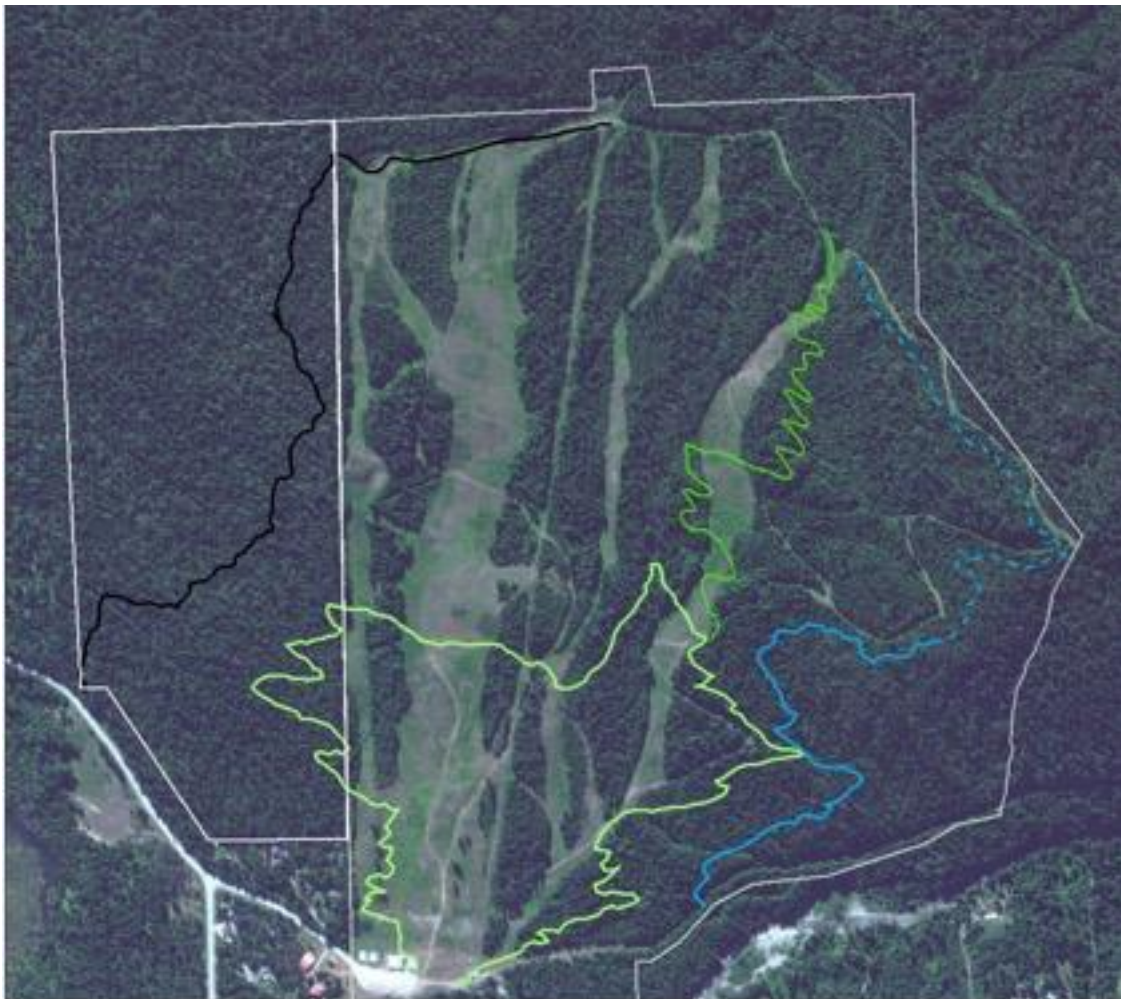
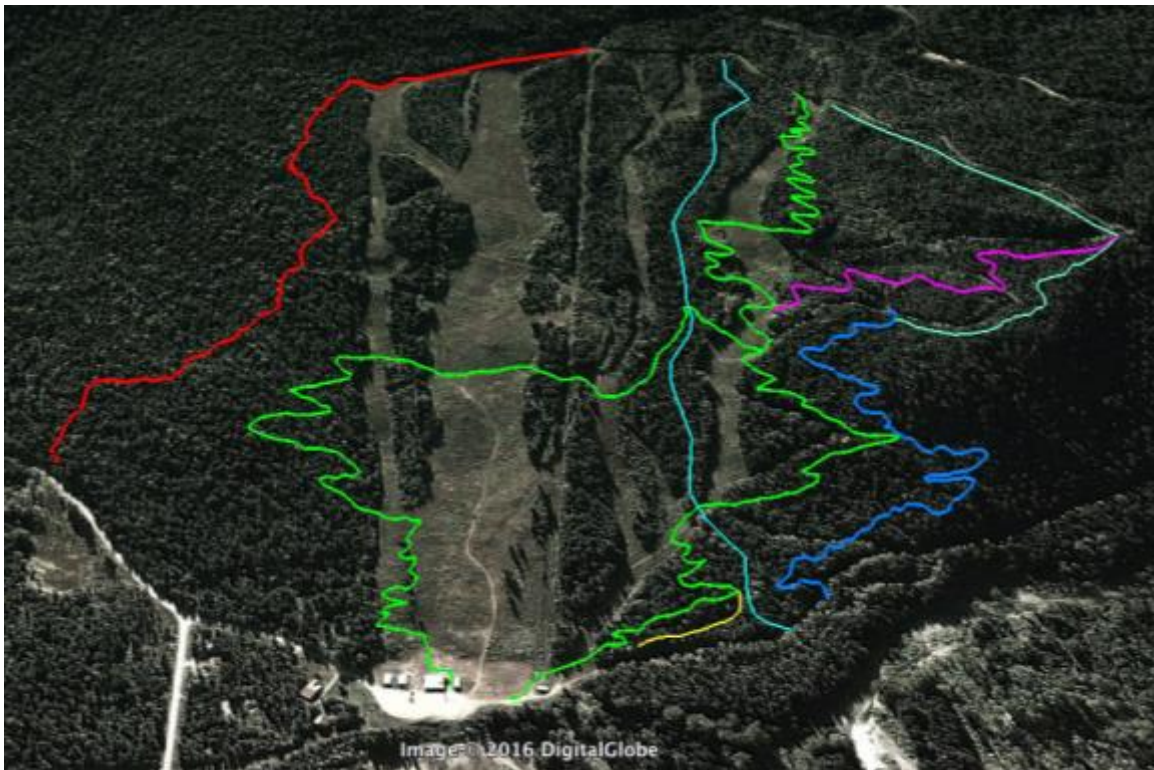


Figure 1. Final trail map as of September 2016 showing completed (solid lines) and proposed (dashed lines) trails.

2017 Objectives

Our objectives and proposed timelines for 2017 are:

- Complete maintenance of existing trails (as early as feasible)
- Complete repairs and upgrades to Sunset loop and Sunrise as required (June)
- Finalize layout of upper Inducer (May-June)
- Continue construction of Inducer (June to August)
- Revisit previous trail route concepts and finalize layout of new trail sections (June-August)
- Begin route finding and layout for 2nd intermediate route and upper hill hiker only loop (as time and volunteer resources permit)



Upper Inducer is shown in light blue. Probable location for a kids trail in yellow. Previous trail layout which will be revisited for appropriateness as a green trail is shown in pink.

Maintenance

Maintenance of Sunset loop, Sunrise and lower Inducer will be completed immediately upon approval of the annual work plan and suitable conditions. Volunteers will complete required maintenance activities, which consist of:

- Ensuring signage is secure and in place.
 - Move some signs from trees to removable rebar posts as feedback is signs are not clear and visible enough, especially at junction of Sunset loop and Sunrise.
- Clearing blow down and brush from winter
- Repairing drainage features

- Repairing bridges if required
- Bringing in surfacing material if necessary

To help address potential risks associated with trail maintenance, construction and non-motorized recreation during periods of high fire hazard, two backpack water cans will be located at the Sunset Creek bridge crossing for use in event of a fire start.

Wildhorse Forestry will be contracted to complete brushing maintenance on Sunset loop and Sunrise throughout the operating season.

One corner on Sunset west is continuing to have significant water problems despite culverting work last season. This corner may need to be relocated if drainage solutions cannot be found. There is one other site of continued water problem that may have boardwalk constructed if other techniques don't resolve the issues.

Construction

Construction will be completed by paid trail crew (SVTS employees) and volunteers.

All trail construction will be hand construction. Trail crew and/or volunteers will clear brush and trees from the designated trail route using chainsaws and brush saws. Efforts will be made to completely remove the root mass for small trees and shrubs to prevent regrowth and "nubbins" that can catch feet and tires. Where roots and stumps cannot be removed they will be cut as flush as possible at the base. Only certified operators with required personal protective equipment will be permitted to operate chainsaws and brush saws. Trail crew and/or volunteers will clear, construct and finish the trail bed using basic tools such as McLeods, picks, shovels, pulaskis and rakes.

Community volunteer build days will be held every other Sunday (i.e. twice per month). "Mega" build days will be coordinated two to four times in a season as time permits. At least two individuals listed as managers and assistants or on the Board of Directors will be present at any volunteer build event. These individuals will be responsible for ensuring that required signage is in place prior to work starting.

Signage

Signage consists of under construction safety signage, difficulty and directional signage on completed trails and trailhead signage.

Prior to clearing and construction starting on a section of trail a "trail closed" sign will be installed at each access point.

Safety and directional signage will be installed once a section of trail is completed and before being opened to the public. This will consist of a difficulty sign (e.g. green circle, blue square) and informational sign indicating allowable uses. Where there are trail

junctions, signs will be installed with name of trail and arrow indicating direction to go to follow that trail. If trail junction is multi-directional cautionary signage such as “Caution Trails Merge” will be installed.

The trailhead signboard was installed last year. The trailhead sign includes a large map and legend, user etiquette information, sponsor logos and a space for posting trail reports, wildlife sightings etc. The trailhead map will be updated this spring. Additional posters for trail maintenance days, group hikes/rides etc. will be posted as required.

Permits

No additional permits (e.g. Water Act, License to Cut) will be required for this years’ proposed activities.

Events

We do not have plans to host any events this year. Group rides and hikes may be organized to encourage community use.

Approval

Dated at Salmo, BC on this ____ day of _____, 2017.

The Salmo Ski Club by its authorized
Signatory:

The Salmo Valley Trail Society
by its authorized signatory:

Per:

Per:

Per:

Per: